



DOUGLAS COUNTY EMERGENCY OPERATIONS PLAN

July 2021

Overview of responsibilities and procedures during and following an emergency or disaster
Contains Private and Security Data
MS1337 and MS 13.43 subd.4

Julie Anderson
juliea@co.douglas.mn.us

Introduction

The residents of and visitors to Douglas County Minnesota rely upon emergency management to plan for all disasters and emergencies. This Emergency Operations Plan details the authority for response and how it will be carried out. Officials from townships, cities, county departments, government agencies, nonprofits, faith-based communities, and private sector partners play a key role in developing this plan.

Plan prepared by:

Julie Anderson, Emergency Manager
7/20/2021

Plan approved by:

Jimmy L. Repp

Record of Review:

Year	Reviewer
2010	ERC
2011	Regional Program Coordinator
2012	Regional Review Committee
2013	Peer
2014	ERC
2015	Regional Program Coordinator
2016	Regional Review Committee
2017	Peer
2018	Regional Program Coordinator
2019	County Board
2020	Regional Review Committee – Waived for COVID
2021	
2022	
2023	

Record of Revisions as of 1-1-2018

Date	Revision	Submitted by	Title
6-1-2018	General Updates	Julie Anderson	Deputy EM
6-10-2018	Morgue MOU	Jeff Karrow	Alexandria EM
10-28-2018	Added transportation annex	Julie Anderson	Deputy EM
11-24-2018	EOC Positions Table	Julie Anderson	Deputy EM
2-14-2019	Siren location map	Julie Anderson	EM Director
4-30-2019	Added AIS annex	Justin Swart	AIS Coordinator
11-1-2019	New siren map	Julie Anderson	EM Director
12-1-2019	Removed old, outdated evacuation maps	Julie Anderson	EM Director
6-10-2020	Updated Search and Rescue Annex to include drone information	Julie Anderson/Mark McCabe	EM Director/Deputy
6-28-2021	Updated information throughout and reformatted entire document.	Julie Anderson	EM Director

Plan maintenance, training, and exercise

The Douglas County emergency management director will serve as the plan coordinator. The plan will be updated annually or as necessary. Douglas County will adhere to procedures established by the Minnesota Department of Public Safety Division of Homeland Security and Emergency Management for reviews and will adhere to the requirements of Emergency Management Performance Grant funds which require participation in at least three exercises during a 12-month period and submitting at least one After Action Review report.

Continuity of Operations – A stand-alone plan has been created for Douglas County that includes contact information, relocation plans, orders of succession, delegations of authority and a reconstitution plan. Records deemed essential shall be stored and backed up in safe locations within the county.

Quick Contact List

Name	Agency	Work Cell Phone
Jerry Rapp	County Board Chair	320-766-2065
Tim Kalina	County Board Vice Chair	320-808-5749
Troy Wolbersen	Sheriff	320-304-9202
Jason Peterson	Chief Deputy	320-304-9221
Heather Schlangen	County Coordinator	320-815-0015
Julie Anderson	Douglas County EM/PIO	320-304-7115
Mark McCabe	Douglas County Deputy EM	320-760-1596
Tom Egan	911 Supervisor	320-304-9248
Kevin Smith	Lead Dispatcher	320-304-3514
Scott Johnson	North Ambulance	320-763-6160
Alomere Incident Command	Alomere	320-762-6121
IT On call	Douglas County IT	320-815-6620
Duty Officer	Duty Officer	800-422-0798
Tom Partington	Rainbow Rider	320-283-5064
Laurie Bonds	Social Services	320-760-8038
Jen Jabas	United Way	612-741-1052
Steve Johansen	Public Works	218-770-1537
Tim Erickson	Public Works Director	320-815-2081
Stacy Honkomp	Assessor	320-808-5654
Jacklin Steege	American Red Cross	320-292-1994
Brian Dahl	Alexandria Light and Power	320-759-3772
Josh Waldorf	Alexandria Light and Power	320-759-3781
Dave Wolf	Gardonville	320-808-1184

Contents

Introduction.....	1
Record of Review:.....	1
Record of Revisions as of 1-1-2018.....	2
Plan maintenance, training, and exercise.....	2
Basic Plan.....	6
Purpose.....	6
Scope.....	6
Authority.....	6
County Government.....	6
City and Township Government.....	7
Responsibilities.....	7
Annex A Notification and Warning.....	10
Responsibilities.....	10
Annex B Incident Management.....	12
Responsibilities.....	12
Annex C – Emergency Public Information.....	15
Responsibilities.....	15
Annex D – Search and Rescue.....	17
Responsibilities.....	17
Annex E – Medical, Health, Mass Fatality.....	18
Responsibilities.....	18
Annex F – Evacuation and Traffic Control.....	20
Responsibilities.....	20
Annex G – Fire Protection.....	22
Responsibilities.....	22
Annex H – Damage Assessment.....	23
Responsibilities.....	23
Policies and Procedures.....	23
Annex I – Congregate Care.....	24
Responsibilities.....	24
Annex J – Debris Clearance.....	26
Responsibilities.....	26
Policies and Procedures.....	26
Annex K – Utilities Restoration.....	29

Responsibilities	29
Policies and Procedures	33
Annex L – Hazardous Materials	34
Responsibilities	34
Annex M – Transportation.....	40
Responsibilities	40
Annex N – Animal Response and Disease Outbreak.....	41
Responsibilities	41
Conclusion	43

Basic Plan

Purpose

Tornadoes, severe storms, high winds, blizzards, and other natural disasters have a history of impacting Douglas County. In addition, incidents such as train derailments, plane crashes, pipeline leaks, active shooters, or release of hazardous materials also pose a risk to the health and safety of Douglas County residents and visitors. An emergency plan is needed to ensure the whole community, including those with access and functional needs, understands their role and responsibilities to prevent, protect, mitigate, respond to, and recover from natural and human caused emergencies.

Scope

This plan covers the entirety of Douglas County, recognizing that all incidents start and end locally. The Incident Command System will be used during the response phase.

Authority

Minnesota Statutes, Chapter 12 provides for a county emergency management director and deputy director to coordinate the activities of organizations of political subdivisions throughout the county; to plan for the emergency operations of county government and other appropriate county government officials and private sector representatives; to acquire equipment necessary in connection with these activities and to expend funds provided by the county board out of general revenue funds.

Minnesota Statutes Section 299K.05 The Minnesota Emergency Planning and Community Right to Know Act which requires ongoing coordinating with facilities in a county that houses hazardous materials.

Douglas County Resolution 6/6/1962

County Government

The county board chair and the coordinator will work with the incident commander and emergency manager on county resources required to respond to a disaster. The county emergency management director/deputy director will:

- Open and staff the Emergency Operations Center (EOC) as needed. The EOC may be opened at its location in the law enforcement center or virtually making use of file sharing technology platform such as Teams. The EOC phone contact is 320-460-7760 or 320-304-7115.
- Coordinate emergency operations with appointed emergency managers in cities and townships (or their designees).
- Work with the county board chair to prepare and send an emergency declaration to the state.
- Work with the county sheriff to activate the National Guard which would complement and not be a substitute for county or city participation in emergency operations.
- Work with the incident commander to contact the Minnesota State Duty Officer at 1-800-422-0798 if needed.
- Organize and execute preliminary damage assessments in the county.
- Be responsible for assisting the county in obtaining any state or federal government resources that may be needed following a disaster.

City and Township Government

Mayors and supervisors will be responsible for overall direction and control of their local government's resources including:

- Fire department/first responders
- Public Works
- Participating in preliminary damage assessments
- Applying for state or federal disaster aid through the county

Each agency, department, or service of county government will maintain their own records during an emergency. These records should include work hours, equipment hours, supplies and materials used, injuries to personnel and damage to public facilities and equipment. Agencies will track when MOUs and MOAs are activated.

Responsibilities

Function	Responsible Agencies	Additional Information
Notification and Warning	911 Dispatch Alexandria and Osakis Police Fire Departments	The Douglas County 911 Dispatch Center is the county warning point. Outdoor warning sirens are activated from this point. Individual siren owners may also be able to activate sirens locally. IPAWS and/or Code Red messages will be sent from Douglas County 911 or emergency management. Fire and law enforcement may go door to door with evacuation and other emergency information.
Incident Management	Incident Commander County Board/Coordinator Sheriff Emergency Management	The Incident Command System will be used in

	City officials	coordination with county officials.
Emergency Public Information	Douglas County PIO City PIOs Alomere Health PIO Horizon Public Health PIO Social media	A Joint Information System/Center will be immediately created so we speak with one voice to relay important information.
Evacuation/Traffic	Douglas County Sheriff's Office Police Departments Fire Departments Public Works	
Fire Response	City Fire Departments First Responders 911 Dispatch	
Search and Rescue	Douglas County Sheriff's Office including Drone Team and Posse Alexandria Police Department Osakis Police Department Fire Departments Lifelink Civil Air Patrol Volunteers	
Medical/Public Health	Alomere Health North Ambulance Ashby Ambulance Parkers Prairie Ambulance Glacial Ridge Ambulance Horizon Public Health Douglas County Social Services Regional Healthcare Coalition Mental Health Providers	
Mass Care/Mass Shelter	Emergency Management Social Services Horizon Public Health Cities American Red Cross United Way Faith Based Private Business	
Mass Fatality	Emergency Management Midwest Medical Examiner Horizon Public Health Red Cross MDH	

Debris Clearance	Emergency Management County Public Works City Public Works Private Business Individual property owners	
Utilities Restoration	Utilities/private companies/ Cooperatives/cities	Restoration of gas, electricity, clean water, internet, and phone service is the responsibility of the provider. Douglas County will amplify messaging on when service is expected to be restored and will coordinate with the providers to assess their needs for additional resources.
Damage Assessment	Emergency Management Douglas County Public Works Douglas County Assessor Alexandria City Public Works Alexandria City Assessor City and township officials State and federal officials	

Annex A Notification and Warning

The Douglas County Sheriff's Office is the county warning point. It is responsible for properly receiving and disseminating emergency notifications to protect life and property in Douglas County.

Responsibilities

Severe Weather

The 911 Communications Supervisor and/or the Lead Dispatcher have overall responsibility for ensuring that all severe weather notifications received by the warning point from the National Weather Service are handled according to procedures outlined in the Severe Weather Checklist, located in the dispatch center. This includes:

- Activating the appropriate outdoor warning sirens
- Activating the Emergency Alert System (EAS)
- Using CodeRED to notify the Emergency Management Group
- Using Active 911 to page fire departments, first responders and weather spotters
- Activate Tone Alert Monitors to notify key facilities and businesses.
- Monitor National Weather Service Talk groups and verify warning was sent over NOAA Alert Radio

Emergency Management, in coordination with 911 dispatch, will assist with additional warnings if needed to direct the response of residents and visitors during a severe weather event. These instructions can be sent via Code Red, Integrated Public Alert and Warning System (IPAWS), and in coordination with law enforcement and fire departments for verbal on-site warnings.

The Douglas County Emergency Management Director will contact the Douglas County Coordinator to ensure county employees take appropriate actions if the severe weather is occurring during normal business hours. Cities, townships, and other governmental agencies in the county are responsible for their employees' response actions.

Non-weather-related emergencies

Dispatchers are trained in use of the IPAWS for non-weather-related emergencies. They will follow the Douglas County Policy: Issuing CodeRED and IPAWS messages, located in the dispatch center. The policy outlines use of message categories: Civil Danger Warning (CDW) and Civil Emergency Message (CEM). It describes which audiences are best suited for Wireless Emergency Alerts on cell phones, Emergency Alert System (EAS) messages on radio, television, and NOAA Weather Radios and CodeRED messages delivered to landline phones, cell phones and email accounts.

Monthly Testing

State policy requires state, counties, and municipalities to test their public warning systems at 1 p.m. on the first Wednesday of the month.

Douglas County will:

- Receive and acknowledge the test warning message from the Minnesota State Patrol
- Use the Civil Defense Test checklist to accomplish required tasks.

Municipalities will:

- Be prepared to receive and acknowledge the test warning from the Douglas County Warning Point (dispatch)
- Monitor the siren for sound and rotation and report any issues to dispatch at 320-762-8151

Douglas County Outdoor Warning Sirens are located at:

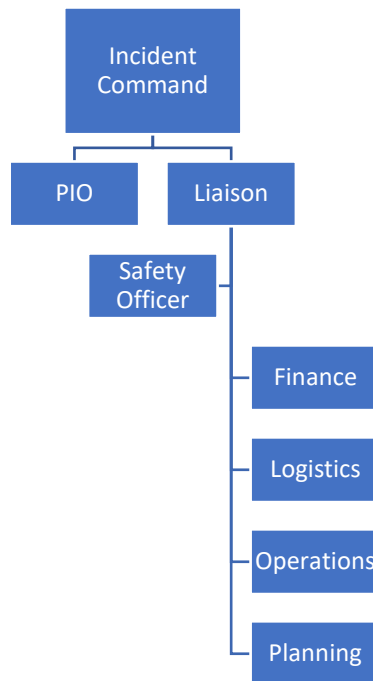
Number	Location	Owner
1	715 Elm Street St. Law Enforcement Center	Alexandria
2	302 Fillmore St. Alexandria Fire Hall	Alexandria
3	1746 Darling Ave. Arabella Manor	Alexandria
4	Voyager Drive & S. Darling Drive	Alexandria
5	N Mckay Ave. & S Le Homme Dieu Dr. NE	Alexandria
6	34 th Ave E & Pioneer Road SE	Alexandria
7	30 th Ave. W & Highway 29 Plaza Tire & Auto	Alexandria
8	610 50 th Ave W. & Highway 29 S	Alexandria
9	800 3 rd Ave. W Douglas County Fairgrounds	Alexandria
10	Lilac Lane & County Road 82 SE	Alexandria
11	Liberty Road NE & Neewana Beach Rd NE	Alexandria Township
12	309 E. Lake Victoria Road SE	Alexandria Township
13	Brandon Fire Hall	Brandon
14	Carlos Fire Hall	Carlos
15	Evansville Bus Garage	Evansville
16	Forada Old Fire Hall	Forada
17	Sunset Access Rd SE & Forada Beach Rd SE	Forada
18	Garfield	Garfield
19	11390 County Road 94 Holmes City	Holmes City Township
20	Kensington Fire Hall	Kensington
21	4214 Country Shores SW	LaGrand Township
22	County Rd 82 & County Rd 8 Brophy Park	LaGrand Township
23	1005 Fireman's Lodge Road SW	LaGrand Township
24	Sunset Strip NW & Arrowwood Dr. NW	LaGrand Township
25	Leaf Valley Fire Hall	Leaf Valley Township
26	Millerville Fire Hall	Millerville
27	Miltona Fire Hall	Miltona
28	Miltona Community Center	Miltona
29	County Rd 5 & County Road 11 NW	Miltona Township
30	Golden Dr. SW & NE Lobster Dr. SW	Moe Township
31	Nelson City Hall	Nelson
32	Osakis City Hall	Osakis
33	1201 Lake St. E Osakis Golf Course	Osakis
34	505 8 th Ave. W Osakis	Osakis
35	County Road 11 NW & Circle Drive NE Carlos	Carlos Township
36	Spring Lake Road NW & Ellis Lake Rd NW	Leaf Valley Township
37	Chippewa County Park	Douglas County

Annex B Incident Management

All emergencies begin and end locally. However, many incidents require response from multiple agencies and coordination is critical to protect lives and property. The Douglas County Emergency Operations Plan outline roles and responsibilities of elected officials, response agencies, non-governmental organizations, and volunteers.

Responsibilities

The Incident Command System (ICS) will be used to establish authority at the scene of an incident. The first arriving senior official will serve as Incident Commander until properly relieved or until Unified Command is established. ICS helps to ensure the safety of responders and others, the achievement of tactical objectives and the efficient use of resources. The Incident Commander will work with responders to determine the scope of the event and whether assistance is needed from Emergency Management.



If needed, the Emergency Operations Center/System is activated by the Emergency Management Director in coordination with County Board Chairperson. If the board chairperson is not available, the line of succession is:

- Board Chairperson
- Vice Chairperson
- Senior board member

If the Emergency Management Director is not available, the line of succession is:

- Emergency Management Director
- Deputy Emergency Management Director
- Sheriff
- Chief Deputy

The functions of the Emergency Operations Center/System will vary according to the type and scope of the event. The primary Douglas County Emergency Operations Center is located at 216 7th Avenue West, Alexandria, MN 56308. The secondary EOC is the Alexandria Fire Station at 302 Fillmore Street, Alexandria, MN 56308.

The primary functions of the Emergency Operations Center/System are:

- Coordination of the response
- Providing a single point of contact, and or location, away from the scene, for supporting department heads, agencies, nonprofits, and volunteer coordination.

The following positions will be filled as needed following activation of the Emergency Operations Center/System.

A Public Information Officer will work directly with Incident Command to:

- Ascertain the need for emergency public information.
- Coordinate the distribution of that information.
- Field and triage calls from media
- Prepare news releases and social media posts.
- Establish a Joint Information Center/System if multiple agencies are involved.
- Monitor media coverage and manage rumor control.

A Liaison will be dispatched to the scene to:

- Relay status information to emergency management
- Determine what immediate needs responders have for:
 - Transportation of impacted victims/residents
 - Need for temporary shelter.
 - Need for American Red Cross
 - Food
 - Water
 - Barricades
 - Portable Toilets

A Safety Officer will track injuries or issues with responders and coordinate with first responder teams to monitor responders on scene. This safety officer will most likely be from the original responding organization.

If the Emergency Operations Center/System is activated, four positions called for under the Incident Management System will be established and staffed.

- **Finance** will work with the Douglas County Board of Commissioners to immediately manage the direction and control of county government resources used in response to the emergency/disaster. Finance will coordinate with Logistics on a line-item code for purchase of materials and equipment and work with emergency management to determine if an emergency declaration is required to purchase items outside of the county's established procurement policies.
- **Logistics** will locate, purchase, and coordinate the movement of equipment and materials needed to the scene. Logistics will track all activities in a daily log.
- **Operations** will monitor the overall incident and create a daily Situation Report which will be distributed to impacted municipalities and elected officials. Operations will:
 - Coordinate with the on-scene commander, county department heads involved in the response and county commissioners.
 - Coordinate with any local governments involved.
 - Coordinate with any state or federal agencies involved.
 - Coordinate with any businesses/industries directly affected.
 - Coordinate with nonprofits who can provide services.
 - Coordinate volunteers and request assistance from MNVOAD if needed.
- **Planning** will create a daily Action Plan detailing the activities and tasks of the next operational period.

Vests and job sheets for EOC positions are located in the EOC.

Role of Leadership

The County Board of Commissioners and County Coordinator will retain command and control over county resources and policies. They will provide guidance on the mission and strategic direction. They will coordinate and integrate messages with on-scene PIOs and other agencies. A Joint Information System may be established to assist with messaging from multiple sources. Community leaders play an important role in motivating and supporting trained, on-scene responders so they can accomplish difficult tasks under dangerous, stressful circumstances. One of their most important functions is to instill confidence in the public that the incident is being managed effectively.

Annex C – Emergency Public Information

An informed public is a calmer public. Before, during and following an emergency, the Douglas County Emergency Manager/Public Information Officer will provide detailed and actionable information to all residents and visitors in the county at the time of the event. The Incident Commander, Sheriff and County Board Chair will speak publicly for the county.

Responsibilities

The Public Information Officer will provide preparedness information on a regular basis, so residents and visitors are prepared with emergency supply kits and emergency plans.

During an emergency, the PIO will coordinate with dispatch to use Code Red, IPAWS, news releases, radio, television, and newspaper interviews to share life safety information.

Following an emergency, the PIO will coordinate a Joint Information Center/System to disseminate information on:

- Shelters/Locating missing family members.
- Reporting damage
- Debris removal
- Locations to obtain water/food.
- Hazardous areas to avoid.
- Updates on power/utility outages

The Public Information Officer will prepare information for:

- The Whole Community including those with Access and Functional Needs
- Residents/visitors who do not speak English (PIO will coordinate with ECHO)
- In a manner that can be consumed by those with limited technology

Media briefings will be held at a safe distance from the scene at a site easily accessible to speakers and media.

Listing of available media sources

Station	Location	Office Phone	email
KXRA/Voice of Alexandria	1312 Broadway Alexandria	320-763-3131	jkorkowski@leightonbroadcasting.com
Hubbard Radio	604 3 rd Ave. W. Alexandria	320-762-2154	Alexandrianews@hbi.com
KBHL Radio Praise FM	515 E. Pike St. Osakis	320-869-3000	mail@praisefm.org
KOOL TV	460 Northside Dr. NE Alexandria	320-421-0086	markanthony@kooltv-mn.com
Echo Press	225 7 th Ave. E. Alexandria	320-766-4173 320-763-1236	cedenloff@echopress.com aedenloff@echopress.com
Douglas County Record	Brandon	320-834-4924	wdrecord@gctel.com

Listing of Public Information Officers/Communication Coordinators to contact

Name	Agency	Contact
Eddie Reif	Alomere Health	320-492-1255
Sara Stadtherr	City of Alexandria	612-207-7697
Amy Reinke	Horizon Public Health	320-766-8580
Megan Chisholm	ALP	320-759-3778
Sue Lundeen	REA	320-766-4348

Annex D – Search and Rescue

The sheriff, chief deputy, or the sergeant on duty can organize a county search and rescue team. Emergency Management can be called to assist with logistics like transportation to search area, providing food and water to searchers, gathering lights, generators, tent, clip boards, white boards, markers etc.

Responsibilities

Inside the city limits, search and rescue will be the responsibility of either the fire department or the police department.

Outside the city limits, the Douglas County Sheriff's Office will have primary responsibility for performing search and rescue.

The Douglas County Sheriff's Office has two drones equipped with cameras to assist in searching a wide area quickly. One drone has an infrared camera which can be used in night searches. The drone team can be activated by calling dispatch at 320-762-8151.

Lifelink may be activated by calling dispatch at 320-762-8151.

The Douglas County Posse may be activated to assist with the search and/or traffic control near the area. The posse is activated through dispatch at 320-762-8151.

For water rescues and searches, the Douglas County Dive Team and Water Patrol deputies are activated.

The Civil Air Patrol may be available to assist with searches for a missing person. Contact them at 320-305-4584.

Minnesota Aviation Rescue Team may be requested through the Duty Officer 800-422-0798.

The Minnesota National Guard may be activated through the Duty Officer 800-422-0798 to assist with searches and stranded motorists during blizzard conditions.

Annex E – Medical, Health, Mass Fatality

This annex provides an overview of how the emergency medical and health needs of Douglas County residents and visitors will be met in the event of a major disaster. It also provides information on how the county will handle a mass fatality event.

Responsibilities

Hospital care – Alomere Health will fill the immediate emergency medical needs. Emergency Department staff monitors a dispatch radio. Dispatch will also call the ER in the event of an incident that may exceed their resources.

Nearby hospitals that would take overflow or meet other needs are: Glacial Ridge in Glenwood, Prairie Ridge in Elbow Lake, Lake Region Healthcare in Fergus Falls and CentraCare health system in St. Cloud.

Ambulance Service – North Ambulance (ALS), Ashby (BLS), Parkers Prairie (BLS), Glacial Ridge (BLS), Lifelink. All available through dispatch.

Home Medical –

Recover Health 1600 Broadway Street is a Medicare-certified home health agency. 320-846-0002

Knute Nelson 2715 Highway 29 #103 320-759-1273

Public Health – Horizon Public Health Alexandria 320-212-7612. HPH will be responsible for food/water contamination concerns and pandemics in coordination with the Minnesota Department of Health. HPH also has access to a database of volunteer nurses that can be activated in a disaster or emergency.

Mental Health – Douglas County Social Services 320-762-2302, Region 4 South Mobile Crisis Team 701-364-0431. Other private mental health providers may be available.

Family Assistance Center – Coordinated and staffed through the EOC with assistance from Horizon Public Health 320-212-7612, Social Services and Red Cross 320-292-1994.

Mass Fatalities – Processing of victims will be the responsibility of the Douglas County Medical Examiner which is the Midwest Medical Examiner's Office in Anoka at 763-324-4400. The Minnesota Department of Health Disaster Mortuary contact is 651-201-5660.

Alomere Health and local funeral homes can provide morgue space.

- Lind Funeral Home Alexandria 320-335-2000
- Anderson Funeral Home Alexandria 320-763-5900
- Roy Hetland Funeral Home Osakis 320-859-2118

Regional MDH contact is Karen Moser at karen.moser@state.mn.us

The city of Alexandria has an MOU with Runestone Community Center regarding use of the facility for body storage. RCC manager Vinnie Hennen 320-298-0319.

Alomere Health has an MOU with Henry's Foods for refrigerated trucks in needed for body storage.

Stress Management for First Responders – West Central Critical Incident Stress Management (CISM) Team 218-347-1699.

West Central Minnesota Healthcare Preparedness Coalition works closely with all hospitals in the region and has an established patient and bed tracking system in place. Alomere trains in emergency response and has a command center and incident response team in place. Contact Shawn Stoen, Coordinator at 320-760-3513 or Margaret Kalina, Chief Nursing Officer/Director of Patient Services at Alomere 320-762-6025.

Annex F – Evacuation and Traffic Control

This annex outlines how evacuation of homes and other buildings will be carried out if required due to an emergency or disaster and who will provide traffic control.

Responsibilities

Douglas County will work with a local incident commander to determine if evacuation is necessary. Those impacted will be notified via Code Red, IPAWS, direct contact with law enforcement or firefighters and the local media.

Transportation will be available for those with access and functional needs through Rainbow Rider, Medi-Van, school buses and other local transportation providers like Ready Ride volunteers.

The Douglas County Sheriff's Office and local police will be responsible for establishing and staffing local traffic control points.

The Douglas County Emergency Operations Center will work with the Red Cross, Social Services, and local communities to determine the best locations for temporary shelters. As of 2021, community centers in Evansville, Brandon, Garfield, and Osakis have a small cache of inflatable mattresses, blankets, and pillows in their community centers. The Red Cross has a cache of cots in the U.S. Bank building in Alexandria and there are approximately 200 cots, blankets and pillows stored in the Douglas County Law Enforcement Center.

Douglas County Emergency Management has pre-identified primary and secondary evacuation routes for the populations at risk for each facility housing extremely hazardous substances which are located on-site above a Threshold Planning Quantity. These quantities are defined in Section 302 of the Emergency Planning and Community Right-to-Know Act. Douglas County has created a GIS map showing the evacuation routes. This GIS map is available through Public Works and Douglas County Emergency Manager.

The Douglas County Posse will assist with traffic control and security during an evacuation.

In all circumstances the Douglas County sheriff will work with local incident commanders and/or hazardous materials teams to determine when evacuees can safely return to their residences.

Primary and Secondary Evacuation Routes for Facilities with Extremely Hazardous Quantities as defined under Section 302 of the Emergency Planning Community Right to Know Act

Facility	Primary Evacuation Route	Secondary Evacuation Route
3M 2115 S. Broadway, Alexandria	22 nd Avenue E. to State Highway 29 South	22 nd Ave. E. to State Highway 29 S to 34 th Avenue W to State Highway 27
ALASD 2201 Nevada Street, Alexandria	Lakota Lane SW to County Road 45 to State Highway 27	Nevada Street to 34 th Ave. W to State Highway 29 S
Alexandria Substation 4855 Waterfowl Dr. SW, Alexandria	Waterfowl Dr. SW to Cross Country Lane SW east to State Highway 295	Waterfowl Drive SW to Cross Country Lane SW (west) to State Highway 29 S
Alexandria Water Plant 514 N Oak Street, Alexandria	N Oak St. to Henry Ave. to N Nokomis Street (north) to State Highway 29 N	N Oak Street to Henry Avenue to N Nokomis St. south to County Road 82
Century Link 601 Irving Street, Alexandria	6 th Avenue E to Broadway St.	Irving St. to 7 th Ave. E to Broadway Street
Douglas Finishing 1602 36 th Ave. W, Alexandria	Iowa St. to 34 th Ave. W. to State Highway 29 S.	Iowa St. to 34 th Avenue W. to State Highway 27
Osakis Creamery 4001 State Highway 27 SE, Osakis	State Highway 27 SE	State Highway 27 SE to County Road 82/Nokomis St. E.
Pro Ag Farmers Coop 4911 County Road 7 NW, Brandon	County Road 7/Central Ave. N to County Road 82 west	County Road 7/Central Ave. N to County Road 82 east
SunOpta Aseptic, Inc. 601 3 rd Ave., Alexandria	3 rd Avenue W./County Road 82	County Rod 82 to County Road 45 to State Highway 27
SunOpta Aseptic, Inc. 3915 Minnesota Street, Alexandria	Minnesota Street to 39 th Ave. E to Nevada St. to County Road 46 to State Highway 27	Minnesota Street to 39 th Ave. E to Dakota St. to County Road 46 to State Hwy 29 S.
TWF Industries 2611 County Road 45 SW, Alexandria	County Road 45 to State Highway 27	County Road 45 to County Rd 46/34 th Ave. W to State Hwy 29 S
Western Consolidated Coop 10 Viking Drive, Kensington	State Highway 55 SW (east or west)	County Road 1 to State Highway 27 W.

Annex G – Fire Protection

This annex provides an overview of how fire protection is provided in Douglas County.

Responsibilities

Fire response is the responsibility of eleven fire departments and first responder units within the county. All departments are volunteer: Alexandria, Brandon, Carlos, Evansville, Forada, Garfield, Kensington, Leaf Valley, Millerville, Miltona, and Osakis.

First responders will assist as requested: Lakes Area First Responders, Holmes City First Responders, Forada First Responders, and other first responders within fire departments.

Contact lists are available through Douglas County Fire Chiefs Association and Douglas County Dispatch and printed copies are in the EOC Cabinet.

Douglas County Dispatch uses Active 911 to page all firefighters and first responders.

Fire Department duties during a disaster or emergency will include:

- Responding to fires and rescue operations
- Assisting in the dissemination of warning information
- Coordinating or assisting with an evacuation in a community
- Coordinating or assisting with a search and rescue within a community
- Responding to hazardous materials incidents, within the limits of Hazmat response training
- Contacting the appropriate state team to assist with hazardous materials or other incidents.
- Providing heavy and light rescue services

All fire departments within Douglas County provide mutual aid to each other.

A map of fire districts is located in the Emergency Operations Center cabinet lower right-hand side.

Annex H – Damage Assessment

How damage assessment will be accomplished following a disaster in Douglas County

Responsibilities

The Douglas County Emergency Management Director and Deputy Director are responsible for coordinating the countywide damage assessment process following a disaster or emergency. They will immediately determine which cities and townships are affected and contact leadership. Cities and townships will assess their damages in coordination with county emergency management. Cities and townships are expected to form their own assessment teams. The county will assist cities with emergency declarations if assistance is requested. The county will connect with Alomere Health, schools, power, water and sewer utilities, ambulance companies and nonprofits to determine the extent of damage which may be eligible for state or federal funding.

The county will determine damage to its infrastructure through a team consisting of:

- Douglas County Coordinator
- Douglas County Engineer and Public Works staff including Ag and Ditch Inspector
- Douglas County Assessor
- Douglas County Facilities
- Douglas County Land and Resource Management

Policies and Procedures

A damage assessment will be initiated within 24 hours of significant damage. Pictures will be taken of damaged areas and county maps and the Collector App will be used to show the location and extent of damage including latitude and longitude and date and time stamp.

When a damage assessment is carried out in conjunction with a request for state or federal disaster assistance, the county emergency management director will coordinate with the Minnesota Department of Public Safety Division of Homeland Security and Emergency Management (HSEM).

The Douglas County Emergency Management Director will be responsible for assisting the county in obtaining any state or federal government resources that may be needed. The director will work with the county board chair and coordinator to declare a local emergency. The director will then contact the HSEM regional program coordinator who can provide technical information and assistance, if requested.

In the event of a major emergency/disaster which exceeds the resources and capabilities of county government, and which requires immediate state or federal assistance, the Minnesota Duty Officer may be contacted at 1-800-422-0798.

Maps of Douglas County are located in the EOC cabinet lower right-hand side. Maps of drainage ditches, Dams, D.A.T.A. trails are also located in the cabinet.

Annex I – Congregate Care

This annex describes how the county will provide congregate care (emergency housing, feeding, clothing, and counseling) to Douglas County residents and visitors impacted by the disaster or emergency.

Responsibilities

Primary: Douglas County Social Services, Horizon Public Health and the American Red Cross Central Region Chapter will work with the emergency management director and city leaders to determine the need for congregate care including, but not limited to:

- Assistance with basic humanitarian needs: temporary shelter, food, and clothing
- Health related needs including replacing prescription medicine, and other essential medical devices such as eyeglasses, hearing aids, canes and walkers, CPAPs, nebulizers, and dentures.
- Disaster mental health support
- Comfort items including blankets, pillows, and basic toiletries.

Shelters

Current shelter locations in Douglas County:

- Alexandria (location to be determined)
- Brandon Community Center 802 Main Street
- Evansville Community Center 106 State Street
- Garfield Community Center 101 Sanstead St. E
- LaGrand Town Hall 501 Town Hall Road NW, Alexandria
- Osakis Community Center 18 E. Nokomis Street

Each location has a county provided supply of air beds, sheets, pillows, and blankets (20)

An additional 200 air beds, pillows and blankets are available from Douglas County Emergency Management. They are stored in the upper level of the law enforcement center along with 20 full sized cots and blankets. The American Red Cross has 50 additional cots available at U.S. Bank located at 701 Broadway in Alexandria.

Volunteers

Volunteers will be used to assist with these shelters. A Volunteer folder is located in the Emergency Operations Center. Specifically, it is located in the cabinets on the west wall in the upper right corner. 20 volunteer id badges are also located in that cupboard. Inside the folder are instructions on opening a shelter, requirements for volunteers, and sign in sheets.

All volunteers must register with their name, address, and phone number.

The volunteer coordinator will ensure volunteers understand:

- The known hazards of the mission
- Safety precautions and equipment
- How to complete a first report of injury form

The volunteer coordinator will ensure the volunteers are appropriate for the task. They will

- Identify the expected duration of service.
- Explain to the volunteers that their personal equipment, vehicles, horses etc. are not covered by the county's insurance policies.
- Provide sanitation stations and bottled water as necessary.
- Ensure accountability of volunteers so no one is lost or left behind.

The volunteer coordinator will fill out all required forms and ensure that all claims, injuries, and information are provided to the proper county authority.

Additional Needs

Douglas County Social Services, Horizon Public Health and the American Red Cross will coordinate to ensure that all disaster victims understand how to access:

- Longer term temporary housing
- Reunification Services
- Disaster Recovery Center
- Cleanup supplies
- Snacks and water

Annex J – Debris Clearance

Describes how debris clearance will be accomplished following a disaster.

Responsibilities

Outside city limits: Douglas County Public Works will be responsible for debris clearance.

Inside city limits: cities with public works staff and equipment will be responsible for debris clearance.

Cities without public works will contract for services. If the disaster is eligible for state or federal disaster assistance, the work must be done in a manner consistent with FEMA and state guidelines.

Policies and Procedures

Debris will be disposed of at a location to be determined at the time of the disaster. Residents will be asked to sort their debris into the following categories:

- Trees and brush
- Appliances
- Household hazardous waste
- Construction/demolition materials
- Garbage
- Recyclables

Cleanup and disposal of spilled or leaked hazardous materials will be done by the responsible party. Emergency evacuation routes will be identified by the Incident Commander and will consider the hazard and wind direction.

The Minnesota Pollution Control Agency and Pope/Douglas Solid Waste will assist with the disposal of hazardous waste.

MPCA, the Board of Animal Health, the Minnesota Department of Agriculture, Douglas County Feedlot Coordinator, and veterinarians in Douglas County will advise/assist with the disposal of animal carcasses.

Removal of debris from private property will be the responsibility of the property owner.

Sequence of events

Debris that is an immediate threat to public health and safety will be pushed to the side of the road. Time & Material Contracts are useful in this situation. FEMA policy limits reimbursement under this type of contract to the first 70 hours of actual work.

Public Works will:

- Prioritize routes to be cleared.
- Coordinate work with power companies
- Decide which storage sites to use.
- Draw up estimates on types and amounts of debris.

Debris that is not an immediate threat to public health will be cleared as follows:

Public Property

Debris on publicly owned property will be removed in accordance with all FEMA and state standards to ensure the work remains eligible for federal and state funds. Removal of debris from parks and recreation areas is eligible when it affects public health or limits the use of those facilities.

The Douglas County Sheriff's Office/Posse will assist in keeping roadways accessible to and from the disposal sites.

Public Works, in coordination with the EOC, will assign staff to monitor contents of trucks using the public debris site to ensure trucks are not overloaded or carrying excessively wet or dirty debris that may result in higher fees.

Public Works will retain copies of all load tickets for documentation of cost, time and trucks used.

Private Property

Removal of debris from private property is the responsibility of owner unless the debris is endangering public health and safety in which case it will be safely removed by a municipal or county government in coordination with the property owner. The cost of debris removal on private property is not eligible under FEMA's Public Assistance Program.

The county, city, or township will work in coordination with the county emergency manager and state and federal disaster recover specialists to provide for a specific time period to allow disaster-related debris to be moved to the curbside for pick up by an eligible applicant (township, city, or county).

Public information officers and local officials will inform citizens of the times and details of debris pick up for appliances, hazardous materials, garbage, and other items. This information will be relayed through local media, social media, flyers and community digital boards.

Determination of eligibility for a federal disaster is ultimately a FEMA responsibility. In general costs for debris removal are eligible when:

- It eliminates an immediate threat to life, health, and safety.
- It eliminates an immediate threat of significant damage to improved property.
- It ensures economic recovery of the community and provides a benefit for the community at large.

Examples include:

- Removing debris to open roadways
- Debris removal from waterways when it has created an immediate threat to improved property.

Determination of eligibility for a state disaster is done by the Department of Public Safety Division of Homeland Security and Emergency Management in coordination with the impacted counties.

Information on tracking costs, use of contractors and types of debris contracts can be found in a file in the EOC cabinet upper right hand side.

Annex K – Utilities Restoration

To provide an overview of how utility services will be restored following a disaster/emergency.

Responsibilities

The following utilities/companies/cooperatives are responsible for providing utility services for Douglas County:

In the event of a utility outage due to a disaster, the following utilities/companies/cooperatives should be called in order to restore service:

Priorities for utility restoration will depend on the nature and location of the incident. Vulnerable populations and facilities essential for public safety will be considered first.

Electrical Service

Runestone Electric Association

6839 Power Lane Southwest
Alexandria, MN 56308
320-763-1121 or 1-800-473-1722

Alexandria Light & Power

316 Fillmore
Alexandria, MN 56308
320-763-6501
320-763-6186 after hours

Ottertail Power Company

215 S. Cascade
Fergus Falls, MN 56537
218-739-8200

Lake Region Coop Electric Association (serving Miltna)

12 5th Ave NE P.O. Box 643
Pelican Rapids, MN 56572
218-863-1171
800-552-7658

Xcel Energy

181st Avenue SE

Glenwood MN 56334

320-634-4596

800-641-4400 emergency response personnel 1-800-892-0343

Gas Service

CenterPoint Energy

Alexandria, MN 56308

1-800-722-9326 Buried Pipe Locations

1-800-722-9326 Emergency

320-763-5101 Local Service

Greater Minnesota Gas, Inc.

22854 County Highway 6

Detroit Lakes, MN 56058

888-931-3411 emergency contact line

Lake Region Cooperative

Natural Gas Serving Miliona

866-367-5732

Northern Natural Gas

877-654-0646

888-367-6671 emergency response line

Xcel Energy

181st Avenue SE

Glenwood MN 56334

320-634-4596

800-641-4400 emergency response personnel 1-800-892-0343

Telephone Service

CenturyLink

601 Irving Street

Alexandria, MN 56308

320-759-3036

Emergency Contact: 320-304-7321

Gardonville Cooperative Telephone Association

Serving Garfield, Brandon, Evansville, Millerville, Erdahl, Leaf Valley and Melby

800 Central Avenue N. Brandon MN 56315

320-834-5151 office

24/7 help desk 320-834-5155 or 888-934-0044

Donna dguetter@gardonville.net

Arvig – serving Osakis.

888-992-7844

Osakis 320-859-2700

Runestone Telephone Association

Hoffman, MN 56339

320-986-2013

320-986-2014

Spectrum

Home Phone Services

833-780-1880

Water Service -

Alexandria Light & Power

316 Fillmore

Alexandria, MN 56308

320-763-6501

320-763-6186 after hours

Alexandria Water Treatment Plant

514 N. Oak Street

David Thelan, Water Treatment Plant Operator – cell 320-420-2909

The following cities in Douglas County have their own water treatment systems:

Alexandria

Brandon

Carlos

Evansville

Garfield

Kensington

Osakis.

The rest rely on private wells.

Broadband Service

Multiple companies provide broadband services to Douglas County through fixed wireless, mobile, fiber, DSL, satellite, and cable. A list of providers, contact information and a map showing coverage is located in the Emergency Management lower right-hand cabinet.

The Minnesota Telecom Alliance houses and operates an Emergency Response Vehicle capable of assisting companies experiencing temporary internet disruptions. This vehicle is housed at Gardonville in Brandon. Contacts

Brent Christensen 651-262-8099

Matt Grommesh 320-304-2593

Additional Mobile Communications/Power Resources

Gardonville has available

- 2 Cells on Wheels (COWS) which are mobile hotspots
- Law Enforcement vehicles at Alexandria College have mobile hotspots installed
- Tower on a trailer to assist when a cell tower is damaged
- Generator on a Trailer (GOAT) needs diesel fuel
- To activate these resources contact Gardonville CEO Dave Wolf 320-808-1184 (cell)

Policies and Procedures

In the event of a widespread outage, the Emergency Manager and/or Public Information Officer will contact the utilities to determine which ones are impacted and how they are providing information to affected customers. This information will be kept in the EOC and updated as needed.

Additional maps

All maps are located on the bottom right-hand shelf of the Emergency Management cabinet.

Pipeline and gas providers

Broadband Service

Cell tower locations

Electricity providers

Annex L – Hazardous Materials

This annex describes how the county will respond to a release of hazardous materials in order to protect life and property. Cities within the county are expected to prepare their own emergency plans, therefore it is not intended that this annex replaces municipal hazardous materials planning.

Responsibilities

The county emergency manager is responsible for pre-identifying facilities that contain certain levels of hazardous materials.

Facilities within Douglas County that possess extremely hazardous materials are required to develop and maintain emergency response plans and procedures consistent with SARA Title III that their employees will follow in the event of a release of those hazardous materials. The facilities must complete what's called a Tier II Form. These are located in the Emergency Management lower right-hand cabinet. The companies colored yellow on the contact sheet are considered 302 facilities because they store an Extremely Hazardous Substance above the Threshold Planning Quantity.

All Tier II facilities are aware of the requirement to immediately contact 911, the state duty officer 651-649-5451/1-800-422-0798, and the National Response Center 1-800-424-8802 following a hazardous materials incident.

Douglas County has spoken with all 302 facilities within the jurisdiction regarding their emergency response plans and 24-hour telephone contact information. Response plans should be on file at the fire station in the city in which the facility is located.

EPA reports containing detailed information on chemicals in each facility are located in the Emergency Management lower right-hand cabinet. Contact information for each facility is also located in that cabinet and the following pages of this plan. This information has been reviewed with 911 Dispatch supervisors.

Upon receiving a call of a hazardous materials incident, 911 Dispatchers will work with facility personnel to immediately determine:

- Name of the substance released.
- Approximate amount of the substance released.
- Known hazards associated with the substance released.
- Community impact

Dispatchers will alert and provide information to firefighters and first responders via Active911.

Dispatchers will use the CodeRED Emergency management group to notify law enforcement, emergency managers and communications supervisor of the incident.

An incident commander will immediately be named. The city fire chief is most likely the person who will be the initial incident commander. He or she will recommend evacuation or shelter in place based on

the substance released, amount of substance released, wind direction and speed and size and nature of affected population.

Dispatchers will coordinate with Douglas County sheriff and/or chief deputy, emergency management and communications supervisor to send emergency messaging. If necessary to protect life and property, a civil danger warning will be sent via IPAWS. The dispatchers will select the CDW code and issue a WEA and EAS message to alert the entire county to avoid the area. Subsequent alerts will be sent via CodeRED to landlines and email addresses.

If conditions allow, local law enforcement may also use their public address systems to verbally warn nearby residents to stay inside, avoid the area and await further instruction. Outdoor warning sirens may be activated.

Additional messaging will include guidance on evacuation or shelter in place.

The county public information officer will work with the affected city to send news releases, do radio interviews, and coordinate any media responding to the scene.

Evacuation or shelter in place orders will be communicated by CodeRED, IPAWS (EAS and WEA), calls to local media and a news release issued by the county or city public information officer.

Evacuation plans and Procedures.

A GIS map showing primary and alternate evacuation routes to all 302 facilities exists and is housed in the protected area of the GIS portal.

A written copy of primary and alternate evacuation routes is also included in this plan in Annex F.

Shelter locations exist in or near each city housing a 302 facility. They are:

- Alexandria
- Brandon Community Center
- Kensington
- Osakis Community Center

Transporting special populations will be accomplished through:

Rainbow Rider buses

Medi-vans

Facility Emergency Coordinators for 302 Facilities

3M

2115 S. Broadway, Alexandria

Paul Fernholz, 320-759-0354

24-hour 320-355-1321

Paul Quam, 320-759-0348

24-hour 701-238-5498

Primary Routes for transportation

ALASD

2201 Nevada Street, Alexandria

Scot Spranger 320-760-6592 (c)

24 hour contact 320-762-1135

Troy Drewes 320-760-6757

Primary routes for transportation

Highways 29 and 27

Alexandria Substation

4855 Waterfowl Drive SW Alexandria

Brian Zavesky 605-376-9939

24-hour contact 605-330-6966

Terry Wolf 605-330-6977

Primary routes for transportation

Highway 29

Alexandria Water Plant Site

514 Oak Street Alexandria

David Thelan 320-420-2909

ALP Office 320-763-6501

Brian Dahl ALP 320-759-3772 (c)

Primary routes for transportation

Highway 29

Century Link

601 Irving Alexandria

Gerard Breen 612-798-2424

24 hour 612-275-8352

24-hour dispatch 866-864-2255
Primary routes for transportation

Douglas Finishing

1602 36th Avenue West Alexandria
Kristy Burton 320-219-2122
Mike Eye 320-766-5007
Joe Kuperus 320-815-3426 (c)
Primary routes for transportation

Osakis Creamery Association

4001 State Highway 27 SE Osakis
Glen Bearson 320-815-0439
Don Lamker 612-839-0359
Laura Kurfeld 320-293-7839
Primary routes for transportation
Highway 27

Pro Ag Farmers Coop Brandon Elevator

104 E. Front Street Brandon
Tim Lauthen 320-808-6116
Jim VonWahlde 218-579-0196
Primary routes for transportation
County Road 82
County Road 7

Pro Ag Farmers Coop Brandon Fertilizer

4911 County Road 7 NW Brandon
Tim Lauthen 320-808-6116
Jim VonWahlde 320-524-2285

Primary routes for transportation

County Road 82

County Road 7

SunOpta Aseptic, Inc.

601 3rd Avenue West Alexandria

Ray Walters 320-304-0153

Joe Gerhardt- 320-815-9256

Primary routes for transportation

County Road 82

Highway 29

SunOpta Aseptic, Inc.

3915 Minnesota Street Alexandria

Paul Norling 320-241-2931

Nolan Wolkow 320-760-7023

Primary routes for transportation

Highway 27

TWF Industries

2611 County Road 45 SW Alexandria

Lee Brewer 320-304-4818

Travis Strahm 320-491-6553

Primary routes for transportation

County Road 45

Highway 27

Western Consolidated Coop

10 Viking Drive Kensington

Paul Anderson 320-241-7312

Jim Banken 320-368-0536

Primary routes for transportation

State Highway 55

State Support

In the event a hazardous materials incident is beyond the capabilities of the county, assistance can be requested through the state duty officer. Emergency response teams include:

- Bomb squads
- Collapsed structure teams
- Chemical assessment teams
- 55th Civil Support Teams
- Task Force One

Annex M – Transportation

This annex outlines the requirements and responsibilities for emergency transportation of people and supplies during and following natural disasters and other emergencies. Local transportation resources will be stressed during emergencies to ensure people, especially the elderly, those with functional and access needs, and isolated in rural areas can be safely evacuated.

Responsibilities

Cities and townships should use available local resources to quickly transport people. This includes neighbors helping neighbors. When a city or township is beyond its capacity to transport those in need, city officials should contact Douglas County 911 dispatchers and request assistance. The county will assist in activating Rainbow Rider, private transport services and school bus drivers to transport people in need.

Transportation Providers are responsible for:

- Tracking all resources including vehicles, drivers
- Tracking time worked
- Supplies needed (gas, tires, fluids)
- Working with the Finance Section Chief at the County Emergency Operations Center to become eligible for federal or state reimbursement

County is responsible for:

- Providing instruction on locations of pick up/drop off
- Coordinating with state and federal officials for reimbursement eligibility
- Providing emergency messaging to alert residents and visitors of transportation opportunities. A CodeRed or IPAWS alert may be sent. Emergency Management will work with ECHO if messaging is needed for non-English speaking residents. Social Services will assist with messaging to other members of the Whole Community such as deaf, hard of hearing and the blind. The county Public Information Officer will coordinate news releases to the media and assist with social media.

Annex N – Animal Response and Disease Outbreak

The purpose of this appendix is to coordinate the effective use of public and private partnerships for the care and well-being of animals during and after an emergency, natural disaster, or disease outbreak. This plan addresses companion animals, livestock including horses, exotic animals, and wildlife.

Responsibilities

Douglas County Emergency Management will coordinate with various partners to ensure the needs of animals are met and the public is kept safe.

Agency	Location	Contact	Area of Expertise
County Feedlot Coordinator	305 8 th Avenue W. Alexandria	Mark Koep 320-762-2932	County farmers, primary focus on livestock producers. A list of all livestock producers is kept in this office.
USDA/FSA	Kandiyohi County (temporary following retirements)	Scott Newberg	
Soil and Water Conservation District	Jerome Hagenmiller	320-763-3191 Ext. 3	Farmer contacts
Minnesota Board of Animal Health	625 Robert Street N. St. Paul	651-296-2942	Widespread disease outbreak such as avian flu
DNR	23070 Lakeshore Dr. N. Glenwood	320-634-7320	Staff to assist with wild animal rescue in flooded area
Lakes Area Humane Society	3811 Nevada Street SW Alexandria	320-759-2260	Housing of companion animals temporarily homeless following an event that damaged or destroyed properties.
4-H Program	305 8 th Avenue W. Alexandria	Coordinator Jodi Hintzen 320-762-3890	Contacts with farmers
County Fair Board		866-656-FAIR	Resource for temporarily housing livestock, exotic animals and wildlife.
Country Vet	217 Lake Street Alexandria	320-763-9922	Emergency care/boarding of injured animals
Alexandria Veterinary Clinic	710 3 rd Ave. W Alexandria	320-762-8112	Emergency care/boarding of injured animals

Douglas County Animal Hospital	3901 Highway 29 S	320-762-1575	Emergency care/boarding of injured animals
Animal Doctor	902 Highway 29 N	320-763-9955	Emergency care/boarding of injured animals
VCA Animal Hospital (serving Osakis)		320-763-9556/855-451-8649	Emergency care/boarding of injured animals

The closest rendering operation is Long Prairie.

Central Bi-Products

25498 US-71 Long Prairie MN

320-732-2819

A regional cache of pet supplies is available and will be activated through the Douglas County Emergency Operations Center

Disease Outbreak

In the event of an animal disease outbreak, Douglas County may close access to trucking companies transporting animals or birds. The Minnesota State Patrol can be contacted through the State Duty Officer to assist with securing all interstate on and off ramps.

Conclusion

For an Emergency Operations Plan to be effective, it must be thoroughly reviewed by the participating agencies, cities, townships, other governmental offices, businesses, and nonprofits. All agencies and businesses referenced in this document have received a copy for their records.

Cities and townships are asked to pass a resolution of support for the Emergency Operations Plan.